

Quick Reference Guide Formwork, Shoring and Plywood

THE PREFERRED CHOICE

Quick Reference Guide
FORMWORK, SHORING and Plywood

P. 6 - 11



FORMWORK

P. 12 - 15



SHORING

P. 16 - 17



PLYWOOD



OHIO Distribution

1355 E ARCHWOOD AVE.
AKRON OHIO
44306

TEL. 1-330-247-1618

Ohio.info@unispanusa.com



FLORIDA Distribution

1840 MARTY FLADDEL DRIVE
DELRAY BEACH, FLORIDA
33444

TEL. 1-561-513-6737

Florida.info@unispanusa.com

www.unispanusa.com

United States of America Toll Free number: 1-800-448-1010
(Nationwide Sales Inquiries and Customer Support)

We sell and rent a diverse range of quality Formwork and Shoring Systems for the construction of all types of concrete structures, providing an integrated and value-added service that keeps all our customers coming back time and again as a friend of our brand

THE PREFERRED CHOICE

OUR MISSION

We sell and rent a diverse range of quality Formwork and Shoring Systems for the construction of all types of concrete structures, providing an integrated and value added service which keeps all our customers coming back time and again as a friend of our brand.

OUR VISION

Our vision is to be the preferred choice for Formwork, Shoring and Ply-Wood Systems in North America by character and integrity, through our disposition for exceptional customer service and continual achievement.



UNISPAN IN THE UNITED STATES

The partners of Unispan formed Unispan USA in 2013 applying their 30 years + years of experience in the international formwork and shoring market. We offer our products and services from multiple branches across the country. UNISPAN USA offers its clients realistic solutions that are tailored to the specific needs of the project.

Our business and customer services are supported by these 5 pillars:

- Design and Engineering
- Logistics
- Sale and Rental
- On site services
- Administration

UNISPAN USA stands apart from its competitors due to its constant focus on improvement by increasing participation in our large variety of ongoing projects.

We specialize in engineering, development, design, rental of formwork and shoring systems for the construction industry. With more than 30 years experience in the market, we have acquired a trajectory that has stood out for delivering an integral service, establishing a close relationship with the client, knowing in detail the requirements of each project and the professionals in charge.

We work closely with our customers every day to scope their requirements and develop project possibilities to help them achieve their goals. We deliver professional proposals, services, and products that are aligned directly with our customer's goals and requirements.



FORMWORK SYSTEMS

CIRCA-FLEX



FORMWORK FOR CURVED STRUCTURES

CIRCA-FLEX is a modular formwork system with variable radius used for curved structures cast on site. The curvature radius of the panels can be easily adjusted by simply turning the radius adjustment screws.

The versatility of the CIRCA-FLEX system allows the casting of walls with oval or "S" shaped configuration and even linear walls. The application fields of CIRCA-FLEX is mainly related to sewage and water treatment plants, but they are also ideal for creating circular silos and semi-circular structures in civil construction.

STRENGTHS

- Only 2 ties required for the 10' height
- Minimum allowable radius 9' - 0"
- Stacks to 20' with no special consideration
- All forms are faced with a plastic coated high quality Birch plywood



Versatile design, Easy to adjust, Multi-radius clamp system

FORMWORK

CHARACTERISTICS

CIRCA-FLEX system consists primarily of a series of vertical frames of shaped sheet metal, with reinforcing ribs equipped with screw adjusters for the curvature of the plywood. Is a modular system that can reach 20' in height thanks to the combination of various modules (base panel of 9' - 10" and the elevated panels of 4' - 11" and 3' - 3"). The formwork has been designed to be handled complete for subsequent uses without deformations

CIRCA-FLEX ASSEMBLY



CIRCA-FLEX arrives flat and simply turning the turnbuckles changes the radius.



Panels are positioned, aligned, stacked, and secured to appropriate heights.



Tie Rails, scaffold brackets and braces are attached and lifted onto prepared foundations.

FORMWORK SYSTEMS

DURA-CLAMP

FORMWORK FOR VERTICAL WALLS

DURA-CLAMP is a European panel system that has the advantage of being light enough to be man handled. Once assembled it is easily moved by crane or other lifting machinery. The profiles of the panels are galvanized steel and Alkus, a polypropylene and aluminum composite is used for the face of the panel. This makes the forms resistant to moisture, UV resistant, and provides a superior finish for a much longer length of time as opposed to plywood. Not only is this system lightweight but is quick and simple to assemble. Using typically only two ties and hammer clamps at each joint it requires no special hardware, such as strong backs or lumbar walers to be handset or ganged.

This is a system that will stand up to rigorous pour schedules, with minimal labor needs. Max form pressure is 1250 lbs PSF. Standard weight of a panel is 6.5 lbs PSF. This allows the use of the system to be used with or without the need of special lifting equipment. These forms can be assembled face down, then lifted into position as a small gang form, or stood up and secured in a vertical, pouring position. These panels can be used horizontally or vertically.

SIZE AND WEIGHT

FORM WIDTH (INCHES)	8' FORM	4' FORM	2' FORM
Adjustable 36"	170 lbs	93 lbs	47 lbs
24"	114 lbs	62 lbs	35 lbs
18"	95 lbs	54 lbs	30 lbs
12"	77 lbs	43 lbs	24 lbs
6"	56 lbs	30 lbs	15 lbs

APPLICATIONS

- Foundations
- Columns
- Bearing Walls
- Stairwells
- Retaining Walls
- Equipment Pads

PROJECT EXAMPLES



Versatile System, Easy to move around the site, Fast to erect

FORMWORK



FORMWORK SYSTEMS

MAGNUM



MODULAR FORMWORK FOR LARGE SITES



Our Magnum system is a modular formwork system. Magnum is the ideal solution for minimizing labor when the site has lifting equipment available. This system consists of large area form panels, 7' 10 1/2" x 9' 10 1/8", approximately 63 sq feet. There are 2 ties per panel joint and 3 aligning clamps. It includes push pull props, working basket, and high strength reusable ties. With this equipment every movement of the crane allows a high square feet area to be stripped, moved, and reset at one time. There are fewer necessary accesories and this allows large panels to be handled in a single pick.

STRENGTHS

- Large modularity of Panels that can be used both vertically and horizontally in the same application
- Availability of smaller fillers reduces the need for job built fillers.
- All forms are faced with plastic coated high quality Birch plywood
- Panels can be assembled flat on the ground or standing up.
- Magnum is compatible with both Circa-Flex and Dura-Clamp

CHARACTERISTICS

Magnum formworks of 7'-10 1/2" x 9' -10", with tie rods inside the panel and formworks of 3' -11" x 9' -10" Including all undersized models) with perimeter tie rods of large surfaces and with few accesories.

MAGNUM SIZES

H 300 cm (9' 10-7/64")	H 150 CM (4' 11-1/16")	ADJUSTABLE PANEL FOR FILLERS
240 x 300 (7' 10-31/64" x 9' 10-7/64")	120 x 150 (3' 11-1/4" x 4' 11-1/16")	100 x 300
240 x 300 reinforced	100 x 150 (3' 3-3/8" x 4' 11-1/6")	100 x 150
120 x 300 (3' 11-1/4" x 9' 10-7/64")	90 x 150 (2' 11-7/16" x 4' 11-1/6")	
100 x 300 (3' 3-3/8" x 9' 10-7/64")	80 x 150 (2' 11-7/16" x 4' 11-1/6")	
90 x 300 (2' 11-7/16" x 9' 10-7/64")	70 x 150 (2' 3-9/16" x 4' 11-1/6")	
80 x 300 (2' 7-1/2" x 9' 10-7/64")	60 x 150 (2' 11-5/8" x 4' 11-1/6")	
70 x 300 (2' 3-9/16" x 9' 10-7/64")	50 x 150 (1' 3-3/4" x 4' 11-1/6")	
60 x 300 (2' 11-5/8" x 9' 10-7/64")	40 x 150 (1' 3-3/4" x 4' 11-1/6")	
50 x 300 (1' 7 11/16" x 9' 10 7/64")	30 x 150 (11 13/16" x 4' 11 1/6")	
40 x 300 (1' 3-3/4" x 9' 10-7/64")		
30 x 300 (11-13/16" x 9' 10-7/64")		

We do also have 100cm (3' -28") tall forms at all the sizes shown above

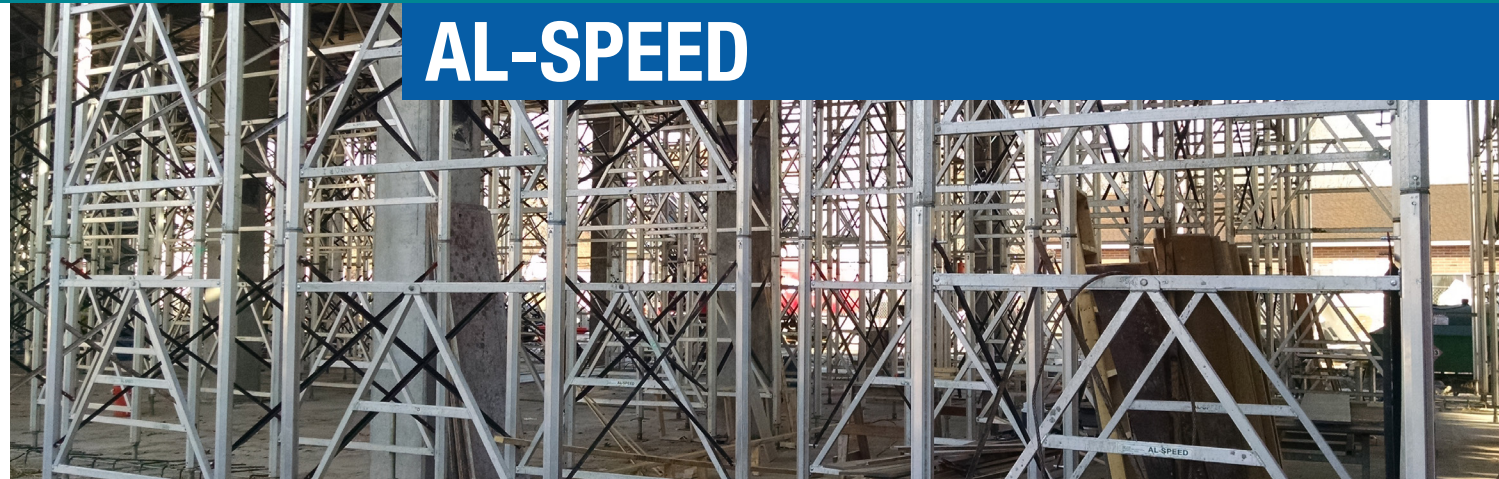


High Productivity, Fast pour rate, Minimum components

FORMWORK

SHORING SYSTEMS

AL-SPEED



SHORING FRAME

The innovative AL-SPEED frame is a light, strong and durable aluminum shoring frame that will improve the quality and the speed of elevated concrete setup and dismantle and reduce concrete construction cost. This versatile aluminum shoring frame is the result of rigorous research and testing; preformed to provide our customers with the very best shoring system available.

The high load capacity of the AL-SPEED frame, combined with being lightweight (50 lbs) and requires minimal components, provides contractors with a shoring frame that is safe, efficient, and economical.

COVERAGE

- 6', 5', 2'8" high frames accommodate all shoring heights (4'6" min.) 6' wide frames reduce the total number of frames needed to support concrete formwork. Approx. 100 sq. ft. of slab support per frame on up to a 12" slab thickness.
- High Shoring Capacity - 16 kip/ leg. 32,000 lbs. support capacity per 50 lb. frame. (2.5 to 1.0 safety factor)

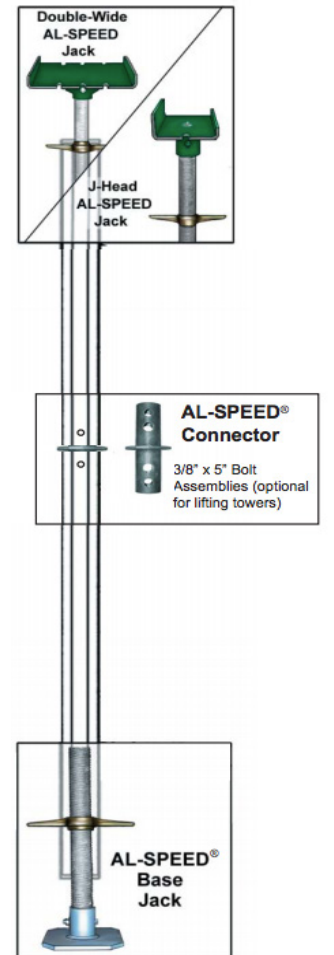
Light weight, Fast to erect and labor saving
SHORING

AL-SPEED FEATURES

- Aluminum: lightweight and durable frame will provide a long service life
- Requires up to 50% less labor than traditional systems
- 6' wide frame reduces total number of frames needed to support suspended concrete and formwork.
- Minimal parts and components. Frame is complete with integral bearing surfaces
- Only 2 revolutions per inch for Al-Speed® jacks.
- Quicklock system allows for easy connection and removal of cross-braces
- Bolted Connections allow frame to be dismantled into high capacity post shores
- Ideal for use with Unispan's aluminum Stringers and Joists

FRAME SIZES

- 6' x 6', 6' x 5', 6' x 2'8"
- 3' x 6', 3' x 5', 3' x 2'8"



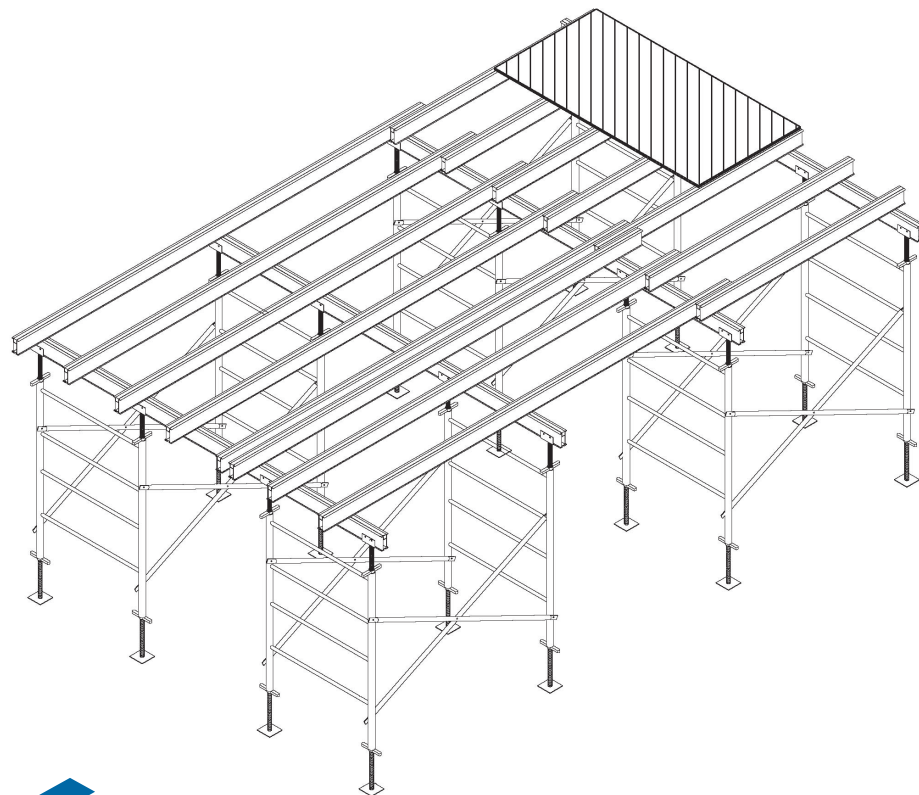
SHORING SYSTEMS

HI-LOAD AND POST SHORES



SUPPORT VERTICAL LOADS

This flexible system is easily adapted to suit most height and load combinations and shoring applications. It comes with a comprehensive range of braces and height-adjustment accessories, and works well with other exceptional Unispan USA products including Aluminum Stringers and Joists. By using connectors with bolts, in special conditions the contractor can easily adapt to variable floor heights without rebuilding towers.



POST SHORE ADVANTAGES

- High strength to weight ratio
- Easy set up and dismantle
- Safety pin locking mechanism
- Easy height adjustment
- Rolled threads
- Self contained adjusting hardware
- Galvanized for durability and longevity

POST SHORE SIZES

- 350 height range of 6'9" to 11'6"
- 550 height range of 10'3" to 17'5"



HI-LOAD

This system is composed of turrets armed by two Hi-Load frames on base jacks, which allow the height of the support structure to be adjusted to the desired point, and two cross braces, forming a self-structured support. The frames have a standard width of 4' - 0", but at heights of 6' - 0" and 4' - 0" in their short version. The crosspieces can vary the distance between frames, possible to obtain spacings of 12" increments from 4' to 10' except 9'. On this structure, the U-head jack is positioned as required, to then mount the primary and secondary beams, which completes the required solution.



Durable, Ease of use, Labor Friendly, Versatile

SHORING

PLYWOOD PRODUCTS

SVEZA DECK 350



ESPECIALLY FOR SLAB FORMWORK



Deck 350 comes with 25, 50 and 100 mm grid patterns. These types of lines simplify plywood marking and cutting, as well as rebar placement. This allows the reduction of labor costs at the construction site. The sides of SVEZA Deck 350 are coated with special acrylate-based paint with a high level of water resistance. Film faced birch plywood is designed for multiple use. Adherence with plywood application and storage regulations will make it possible to increase its service life. SVEZA Deck 350 is a special film faced plywood with a grid pattern intended for slab formwork. Engineered from highest quality birchwood. Unispan chose Sveza to be our partner in plywood due to the synergy that exists regarding service, product quality, and similar company values.

SPECIFICATIONS

Standard sizes, length x width, mm (ft)	1525x1525 (5x5) 1220x2440x1220 (4x8x4) 1250x2500x1250 (4x8x4) 1500/1525x2440/2500 (5x8) 2440/2500x1500/1525 (8x5) 1500/1525x3000/3050 (5x10)
Thickness, mm	4-40
Plywood grade	I (B, S), II (BB), III (CP), IV (C)
Surface type	Outer layers sanded (S2S), one side sanded (S1S), unsanded (NS)
Formaldehyde emission class	E1
Waterproofness	Higher
Density, kg/m³	640-700
Moisture content, %	5-14
Edge sealing	—
Plywood is produced under STO 00255177-001-2013 "General purpose plywood with birch face veneers."*	

APPLICATIONS

- suitable for wall and floor formwork
- replacement sheets for framed formwork
- architectural concrete
- pre-cast member components
- high number of repeat uses and long lifespan

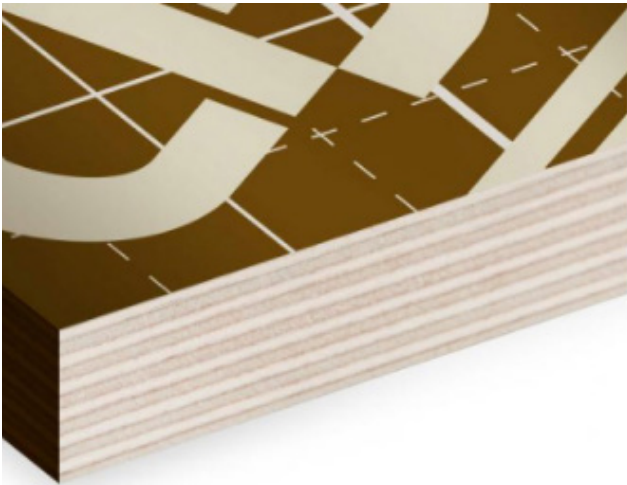
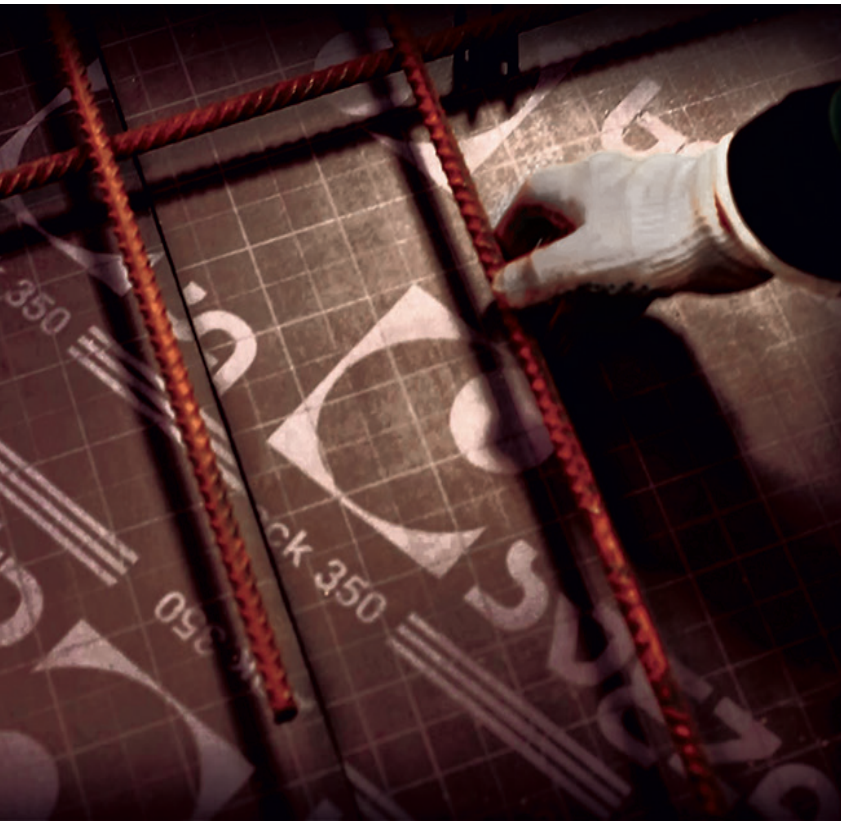
DECK 350 FEATURES

- 100% birch plywood
- Easy to cut and mark
- Easy to place bars
- Reduces work time and labor costs
- Wear resistant surface
- Moisture protection on the edges
- Convenient packaging



DECK 350 BENEFITS

- Highly wear resistant
- Resistant to most aggressive environments
- Higher water resistance
- Slip resistant (meshy surface)
- Durable
- Hard surface
- Resistance to temperature
- Temperature range of -40°F to +122°F
- Comes in a variety of thicknesses and sizes



Most Durable, No delamination, Optimum finish

PLYWOOD

CALL US TODAY

United States of America

Toll Free number: 1-800-448-1010

(Nationwide Sales Inquiries and Customer Support)



PREFERRED CHOICE